



Organize and Track Your Samples with Ease

SampleWare 3.1

MSDE Install and Network Configuration

1. Introduction

This manual is intended to help network administrators install the SampleWare MSDE database and configure SampleWare network edition.

2. MSDE Installation Procedure

The SampleWare MSDE installation package can be downloaded from the following link:

http://www.infomatrica.com/downloads/SampleWare_MSDE_Installer.exe

This installation package must be run on the server that will host the MSDE database. The installer must have access to an internet connection to download the necessary files from the Biomatrixa FTP site. If an internet connection is not available, contact Biomatrixa for a full CD-ROM copy of the installation package.

During the installation procedure, the appropriate files will be downloaded from the Biomatrixa FTP site and MSDE will be installed on the computer.

3. Client Configuration

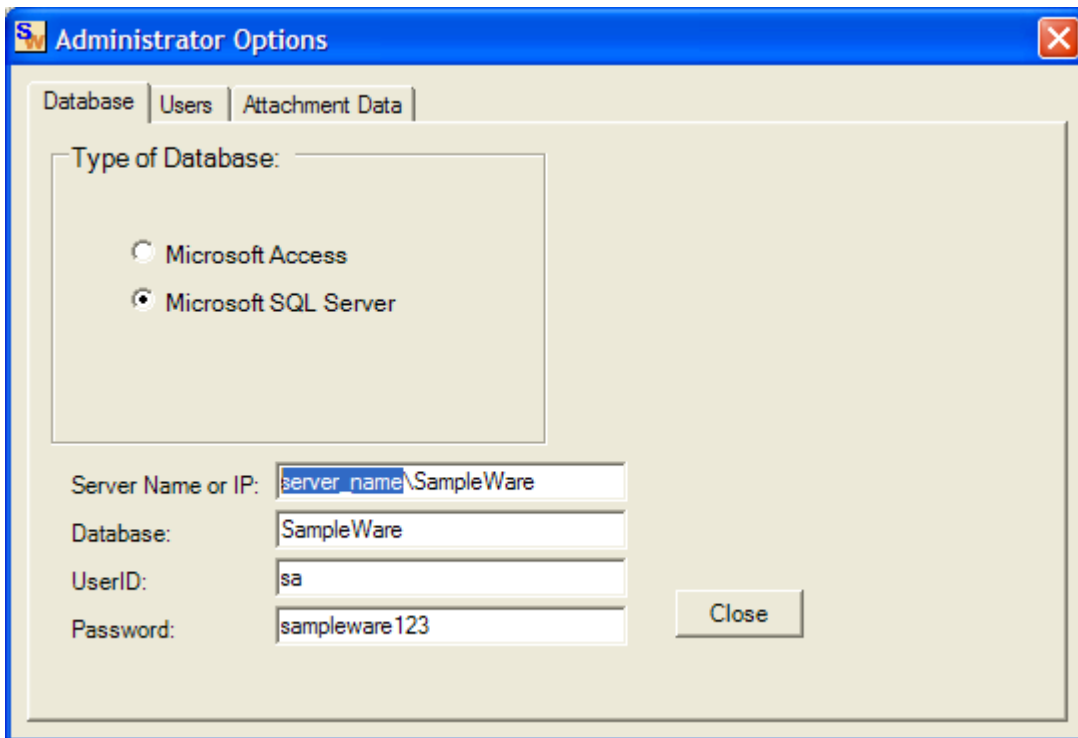
The Client configuration for a Network installation of SampleWare consists of setting each SampleWare installation to point to the MSDE database and appropriate shared Attachments folder. On each client machine, first install the SampleWare Network Edition.

Database Configuration

When the application is launched, select the menu item Admin > Options. In the "Database" tab, configure the server settings as follows using the appropriate server name on which the database was installed (see image below).

1. Select 'Microsoft SQL Server' as the Type of Database
2. In the field "Server Name", replace 'localhost' with the name of the server on which the database was installed.

Once complete, select the Close option to save the changes.



Attachments Directory

Create a shared folder on the network that all SampleWare users have read and write access to it. Sample attachments will be saved to this directory. The path and mapped drive must be the same for all users. To configure SampleWare to use this directory, select the menu item Admin > Options and click on the Attachment Data tab. Use the Browse feature to locate the shared attachment directory. Select OK to implement the configuration

