



Organize and Track Your Samples with Ease

SampleWare 3.1

SQL Server and Network Configuration



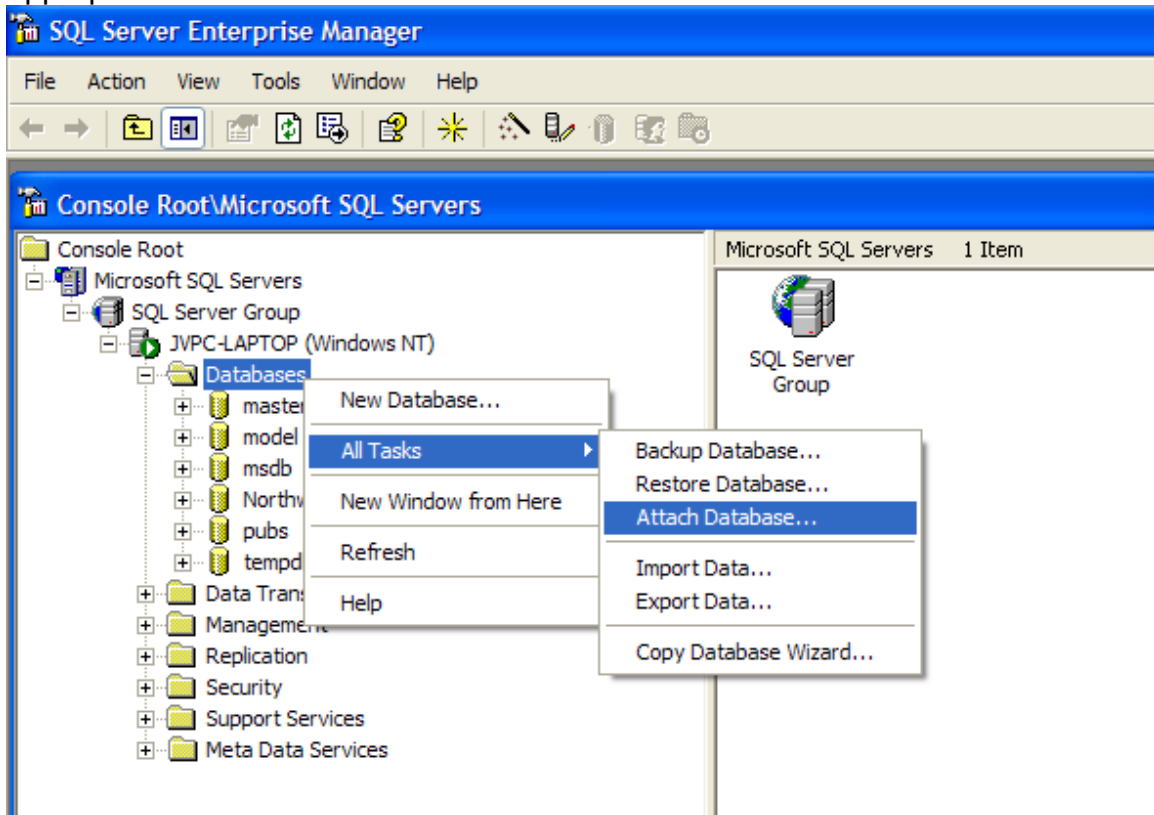
1. Introduction

This manual is intended to help network administrators install the SampleWare database onto a SQL Server configure SampleWare network edition. The database is provide as an MDF file that can be attached to an existing SQL Server instance

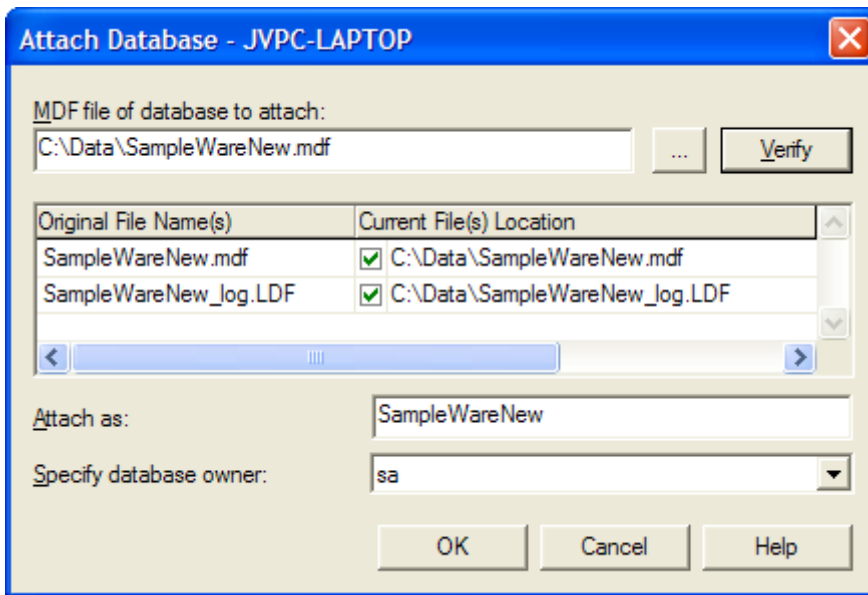
2. MDF Installation Procedure

The SampleWare MDF file can be downloaded from the following link:
<http://www.biomatrica.com/downloads/SampleWareSQL.zip>

In SQL Server Enterprise Manager, select to attach a database to the appropriate server:



In the 'Attach Database' dialog, select the SampleWareNew.MDF file and select OK:



3. Client Configuration

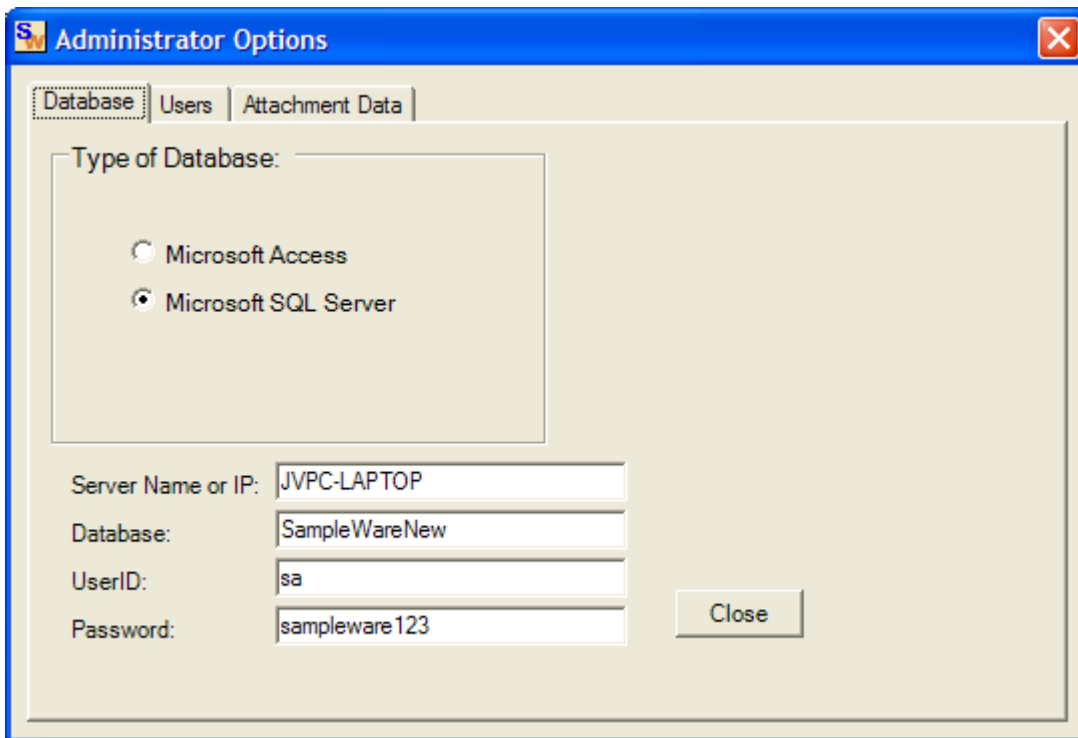
The Client configuration for a Network installation of SampleWare consists of setting each SampleWare installation to point to the correct SQL database and appropriate shared Attachments folder. On each client machine, first install the SampleWare Network Edition.

Database Configuration

When the application is launched, select the menu item Admin > Options. In the "Database" tab, configure the server settings as follows using the appropriate server name on which the database was installed (see image below).

1. Select 'Microsoft SQL Server' as the Type of Database
2. In the field 'Server Name', replace 'localhost' with the name of the server on which the database was installed.
3. In the field 'Database', enter the name given to the database when the MDF file was attached to the server.
4. Enter the user name and password for a user that has read/write privileges.

Once complete, select the Close option to save the changes.



Attachments Directory

Create a shared folder on the network that all SampleWare users have read and write access to it. Sample attachments will be saved to this directory. The path and mapped drive must be the same for all users. To configure SampleWare to use this directory, select the menu item Admin > Options and click on the Attachment Data tab. Use the Browse feature to locate the shared attachment directory. Select OK to implement the configuration

